

Retrofit field unit for 1 smoke control damper

- connects 1 smoke control damper to the Bustec Ringbus
- provides a terminal connection for the Belimo BE230.. and BLE230 actuators
- has a predefined address (no addressing required during system commissioning)
- AC 230 V mains power



## Technical data

Electrical data	Nominal voltage	AC 230 V 50/60 Hz
	Nominal voltage range	AC 100 ... 230 V
	For wire sizing	18 VA
	Power consumption from mains	Actuator consumption + 50 mW
	Power consumption from bus	5 mW
	Connecting	Power supply terminal 2 x 3 x 2.5 mm <sup>2</sup> 2 x Actuator output terminal, 6 x 1.5 mm <sup>2</sup> 2 x Actuator power supply terminal, 3 x 1.5 mm <sup>2</sup> 2 x RingBus terminal 4 x 1.5 mm <sup>2</sup> wire
Safety	Protection class	Class II (all insulated)
	Degree of protection	IP54
	EMC	CE according to 2004/108/EC
	Low-voltage-directive	CE according to 2006/95/EC
	Rated impulse voltage	2.5 kV
	Control pollution degree	3
	Type of action	Type 1
	Software class	A
	Ambient humidity range	max. 95 % r.H., non condensing
	Ambient temperature range	-20 ... +60°C
Dimensions / weight	Non-operating temperature	-40 ... +85°C
	Maintenance	Maintenance-free
	Dimensions	154 x 114 x 77 mm
	Weight	400 g

## Safety notes



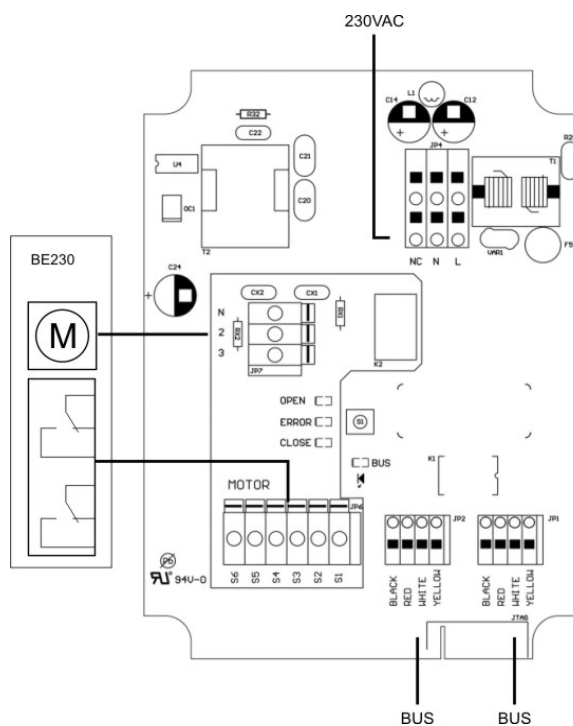
- The device is not allowed to be used outside the specified field of application, especially in aircraft or in any other airborne means of transport.
- Caution: Power supply voltage!
- It may only be installed by suitably trained personnel. Any legal regulations or regulations issued by authorities must be observed during assembly.
- The device may only be opened at the manufacturer's site. It does not contain any parts that can be replaced or repaired by the user.
- The device contains electrical and electronic components and is not allowed to be disposed of as household refuse. All locally valid regulations and requirements must be observed.

## Product features

Control of one smoke control damper actuator	RBFU 2.02 is used for controlling one Belimo 230 V smoke control damper actuator (BE230.., BLE230). The unit is connected to the Ringbus master controller via a 4 wire ring bus communication.
Predefined address	Each unit has a predefined address and therefore has not to be addressed during the system commissioning.
Work without 230 V	RBFU 2.02 unit is able to work without 230 V, but then it is only sending data about actuator position to Ringbus master controller and is not able to turn on/off the actuators.

## Electrical installation

Wiring diagram



## Dimensions [mm]

Dimensional diagrams

